



# PRODUCTS AND SERVICES GUIDE



# MACHINE TOOL SOLUTIONS

Customer relationships mean **everything** to us at All World. We offer personalized attention and hassle-free transactions by leveraging our extensive inventory, engineering expertise, years of experience, and comprehensive service capabilities. Our goal is to provide tailored solutions that meet each customer's application requirements and budget constraints.



All World carries a vast inventory of over 20,000 parts worth \$15 million from 300+ premium brands. Our selection covers all categories, from fluid power to mechanical, electrical to filtration. We also supply machine lubrication and sealing solutions. Count on us for high-quality, cost-effective drop-in replacement spare parts available for same-day shipment.



Our team of skilled technicians perform specialized repair services like chiller repair, field service, and complete machine rebuilds at one of our facilities or on site. If your machine tools need a rebuild, retool, or retrofit, we offer it at a fraction of the cost of purchasing a new machine.



All World provides custom machine accessories to optimize machine tool performance. We bring customer ideas to life through engineering, manufacturing, and product assembly. Our lineup includes branded workholding products, like ClampMAX® Hydraulic Power Systems, ARROW® Workholding Fixtures, and CorePULL® Hydraulic Power Systems for plastic injection molding.

# AFTERMARKET SPARE PARTS

- Bearings
- Belts
- Breakers
- Chillers
- Contactors
- Cylinders
- Fans
- Filters
- FRLs
- Fuses
- Grease
- HPU's
- Lube Pumps
- Machine Safety Glass
- Mist Collectors
- O-Rings
- Pumps
- Relays
- Rotary Unions
- Seals
- Sensors
- Switches
- Tramp Oil Skimmers
- Valves
- Work Lights
- [And More](#)



Global partnerships



Turn-key support

**NO MIN ORDER**

No minimum orders



Same-day shipping



Brand name products



Competitive pricing

# PRODUCT BRANDS

**azbil**

**IKO**

**LUBE USA**

**A-RYUNG**

**METROL**

**KYODO YUSHI**

**ROYAL PRODUCTS**

**TERAL**

**CKD**



**NACHI**

**MITSUBISHI ELECTRIC**

**TAISEI KOGYO**

**OMRON**

**DAIKIN**

**SMC**

**NOP**

**NOK**

**SAKAGAMI**

**BANDO**

**YUKEN**

**DEUBLIN**

**PATLITE**

**Fuji Electric**

**+ HUNDREDS MORE!**

BALLUFF  
BIJUR DELIMON  
BROTHER  
CHANNELLOCK  
DAITO  
ESTWING  
FANUC  
FKD  
FORSHEDA  
FYH  
GATES  
GRACE USA  
GRAYMILLS  
GRUNDFOS  
HABOR  
HAWE  
HITACHI SEIKI  
HORIUCHI  
HYDROKOMP  
IDEC

INA  
IZUMI  
JOHNSON LEVEL  
KANTO SEIKI  
KITAGAWA  
KLUBER  
KOGANEI  
KOMA PRECISION  
MASUDA  
MAYHEW  
MITSUBISHI  
MURR  
NEWALL ELECTRONICS  
NITTA MOORE  
NSK  
NTN  
OGURA  
OPTIBELT  
ORIENTAL MOTOR  
PANASONIC  
PHILLIPS

PIONEER STEEL  
PISCO  
RBI  
SCANWILL  
SCHMERSAL  
SHELL  
SHOWA  
SUMITOMO  
TAIYO  
TAMAGAWA  
TELEMECANIQUE  
TOKYO KEIKI  
TOYO OKI  
UMV  
VALQUA  
VICKERS  
WAGO  
WILDE TOOL  
WRIGHT TOOL  
YAMASHIN

# REBUILD & RETROFIT

For nearly four decades, our skilled technicians have meticulously restored machines to their original factory standards.

In addition to rebuilding services, All World maintains an extensive inventory of quality used machines for sale. Each machine undergoes rigorous inspection, refurbishment, and testing to ensure peak performance.

## OUR PROCESS

- 01** | Your machine undergoes a thorough disassembly, with each component carefully inspected.
- 02** | We break down the machine to its essentials, addressing everything from spindle to electricals, hydraulics to aesthetics.
- 03** | After rebuilding—including spindle reconstruction, machine scraping, and detailed electric and hydraulic inspections—the machine undergoes sandblasting and receives a new coat of paint on all sheet metal.

**Okamoto**

**HARDINGE**

***Bridgeport***



MITSUI & CO.

**Harig**

EXPERTISE IN THESE BRANDS



# OIL CHILLER REPAIR



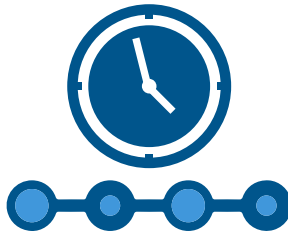
WE CAN CROSS ANY BRAND

Ensure optimal operation of your cooling system with All World's Chiller Repair, one of the largest and most recognized chiller repair operations in North America. Our adept HVAC certified technicians specialize in restoring chillers to like-new condition efficiently, cost-effectively, and with very little downtime.



# 50<sup>+</sup>

Years of combined experience



5 to 7 day turnaround time



Common spare parts in stock

## FIELD SERVICES

- Diagnostic Repair
- Ball Bar Analysis & Laser Calibration
- Lubrication System Repair & Retrofit
- Machine Installation
- Preventative Maintenance Programs



# CLAMPMAX<sup>®</sup>

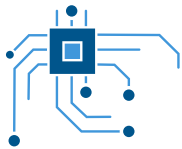
## HYDRAULIC POWER SYSTEMS

Combining Daikin's inverter-driven hydraulics with ifm's cutting-edge technology, ClampMAX workholding solutions offer unmatched performance and efficiency. Compact yet powerful, they offer multiple pressure and flow parameters with instant switching for advanced applications.

With a built-in control panel for easy adjustments and discreet wiring using M12 connectors, setup is streamlined and maintenance is simplified. Plus, standard 10-micron spin-on return filters ensure contamination-free operation and extended lifespan.



Capable of live hydraulics up to 5000 psi



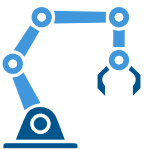
Programmable components & monitoring abilities



IoT ready



Optional accessories



Integrates into robotic cells & CNC machines



Fully customizable



Communication via Io-link, TCP/IP, Modbus, Ethernet/IP & more

# COREPULL®

## HYDRAULIC POWER SYSTEMS

CorePULL offers a solution to common issues faced by plastic injection machine manufacturers. Its hybrid hydraulic package features an inverter-controlled variable-speed electric motor that eliminates the need for a large, hot, loud, and inefficient hydraulic system.

With IoT-ready technology and a portable HMI, CorePULL also provides enhanced operator control and data collection.



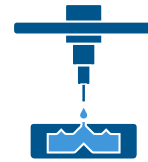
Delivers energy savings up to 63%



Integrates into IMM machines



Operates quietly at 60-80 dba noise levels



Stores up to 100 mold settings



Automatically adjusts pressures & flows



Requires no cooling water



Access to manuals, documentation, & analyses



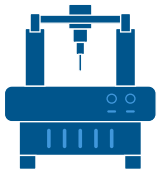


# ARROW<sup>®</sup>

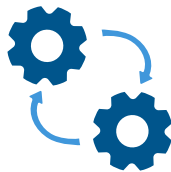
## WORKHOLDING FIXTURES

ARROW Workholding Fixtures have been locating, clamping, and supporting the most delicate parts for diverse industries and applications since 1963.

With a focus on quality and durability, ARROW hydraulic, pneumatic, and manual fixtures range from 200 mm to 1000 mm, catering to vertical and horizontal machine centers as well as lathes.



Integrates into robotic cells & CNC machines



Reduce handling & idle spindle time



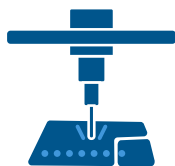
Low-maintenance fixtures save time & money



Adhere to quality management standards



Hold aluminum, steel, iron, & more



Accomodate machining, deburring, & welding needs



# SpindleSHOT®

## HIGH PRESSURE COOLANT SYSTEM

An innovative high pressure coolant system, SpindleSHOT® efficiently removes chips during deep drilling operations for better tool longevity and part accuracy.

SpindleSHOT outperforms other CTS systems with its quiet operation. Its compact, efficient design includes an automatic back flush system for clog-free filtration. Easy to integrate into existing machines, SpindleSHOT's control package offers user-accessible features through its intuitive human machine interface (HMI).



100-1,000 psi adjustable pressure range



Instant access to instruction manuals



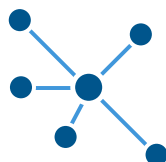
IoT ready with multiple connectivity options



Monitor the entire system's statuses



Self-cleaning filter eliminates maintenance



Real-time diagnostics



Optional chiller for increased performance

# cnsee®

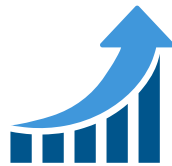
## DATA ACQUISITION

Introducing an innovative light tower and IoT data monitoring platform, designed to boost manufacturing efficiency. Seamlessly integrating onto existing machine tools, cnSEE® makes real-time operational insights visible on any computer dashboard, forming an interconnected mesh network. Whether cnSEE is connected to CNC machines, conveyors, assembly stations, or other equipment, All World ensures a seamless integration.

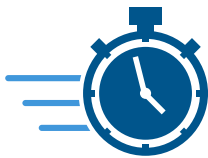
The system offers comprehensive insights into machine health and predictive maintenance and can signal when machinery malfunctions or when it might soon require replacement parts. When integrated with wired monitoring, it can monitor motor temperatures, gauge and vibration levels, gearboxes, bearings, and more. Options dependent on application and may include:



Text and email notifications for equipment stoppages



Monitor historical data (by weeks or years)



Track setup times, cycle durations, & downtime



## **CORPORATE HEADQUARTERS**

6164 All World Way  
Roscoe, IL 61073  
815-943-9111  
allworldmachinery.com

## **NEW YORK SERVICE CENTER**

20 Turner Drive  
Spencerport, NY 14559  
815-397-0862  
allworldmachinery.com

## **ARROW WORKHOLDING SOLUTIONS**

5191 27th Avenue  
Rockford, IL 61109  
815-397-0862  
arrowworkholding.com

## **MEXICO BRANCH**

JGN Business Park, Bodega 36  
Prolongación Bernardo Quinatana #2481  
Col. Felipe Carrillo Puerto  
Querétaro, QRO. C.P.76138  
+52 442 291 0597

## **TITAN MACHINERY SALES**

511 Capital Drive  
Lake Zurich, IL 60047  
3456 Cameron Drive  
Sanford, NC 27332  
847-726-7660  
titanmachinerysales.com



# **ALL WORLD**